



GAT MONTHLY MEMBERSHIP PROGRESS REPORT

Results as of: 7/31/2023

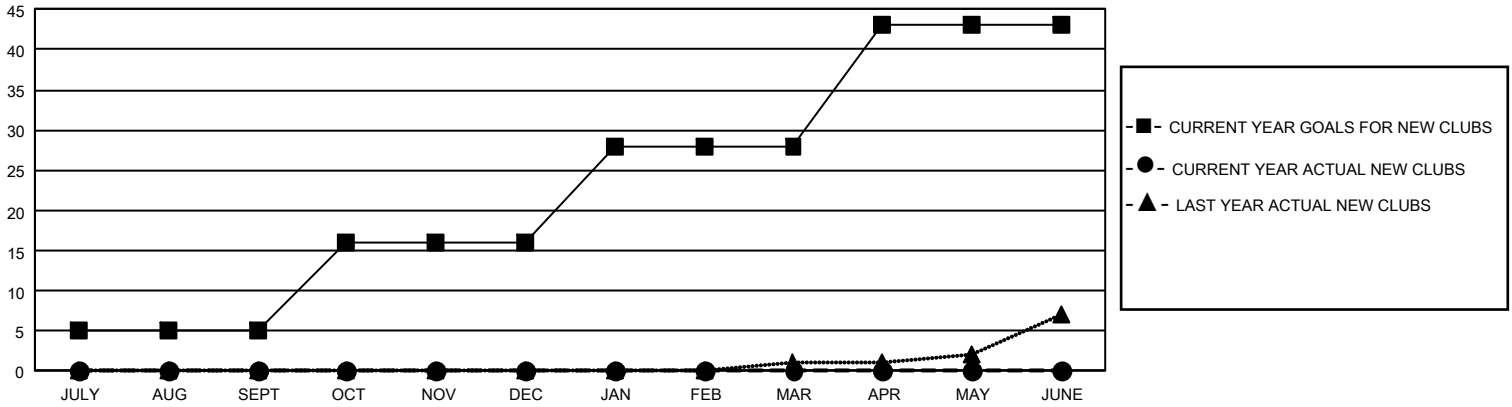
GMT Constitutional Area 1, Group C

REPORT DOES NOT INCLUDE CLUBS IN UNDISTRICTED AREAS.

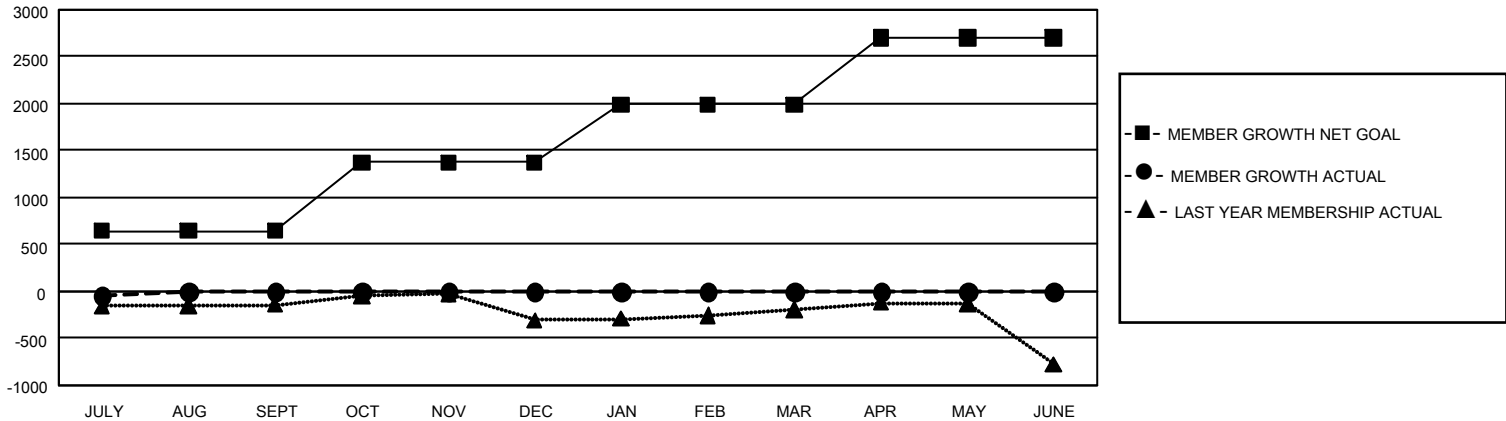
Clubs			
RESULTS FOR 2023-2024			
QUARTER	NEW CLUB GOAL	NEW CLUBS	DROPPED CLUBS
JULY/AUG/SEPT	15	0	2
OCT/NOV/DEC	33	0	0
JAN/FEB/MAR	36	0	0
APR/MAY/JUNE	45	0	0

Members			
RESULTS FOR 2023-2024			
QUARTER	MEMBER GROWTH NET GOAL	MEMBER GROWTH ACTUAL	DROPPED MEMBERS ACTUAL (including transfers)
JULY/AUG/SEPT	643	417	414
OCT/NOV/DEC	728	0	0
JAN/FEB/MAR	619	0	0
APR/MAY/JUNE	709	0	0

GOALS AND ACTUAL NEW CLUBS CUMULATIVE



GOALS AND ACTUAL MEMBERS CUMULATIVE



DROPPED CLUBS: 2 DROPPED MEMBERS DECEASED 54 CLUB CANCELLED 0 OTHER 360 TOTAL 414	189 CLUBS OF 1,399 ADDED 1 OR MORE NEW MEMBERS	GENDER DISTRIBUTION MALE 29,537 (69.30%) FEMALE 13,072 (30.67%) NON BINARY 1 (0.00%) PREFER NOT TO ANSWER 14 (0.03%)
	CLICK HERE FOR CUMULATIVE MEMBERSHIP DATA	TOTAL FAMILY UNIT MEMBERS 8,799 FAMILY MEMBERS PAYING HALF DUES 4,466